

ENVILAR 2CH-ZG-BOX-RELAY

EAN: 5712716078543

CE RoHS 

Sikkerhed og advarsler/Safety & Warnings

DA:

- Sluk strømmen før installation af produktet.
- Udsæt ikke produktet for fugt.
- Skal installeres af autoriseret el-installatør.
- Kan monteres i el godkendte samledåser

EN:

- DO NOT install with power applied to device.
- DO NOT expose the device to moisture.
- Must be installed by certified electrician.

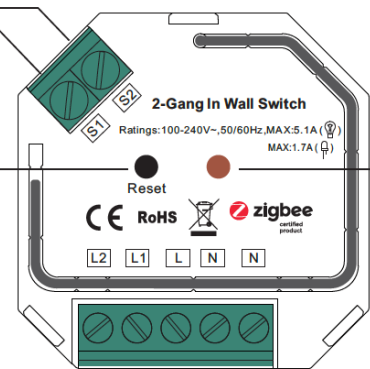
Tilslutningsdiagram/Connection diagram

DA: 2 kanal indgange til at styre hver sin udgang.

EN: 2 channel switch input, to control 2 channels load separately

DA: Reset af netværk parring, touchlink, gendan fabriksindstillinger

EN: "Reset" Key, for network pairing, touchlink, factory reset of the switch







DA: LED indikator: forbliver slukket hvis enhed ikke er tilføjet til et zigbee netværk, forbliver tændt efter enhed er tilføjet til et netværk. Samme indikator som ved forbundet belastning ved kommission, netværk parring, touchlink, gendan fabriksindstillinger.

EN: LED indicator: stays off if the device is not added to a Zigbee network, stays solid on after the device is added to a network. Same indication as connected load when commissioning the device: network pairing, touchlink, factory reset.

2 channels load output AC power input

Produktdata/Product data

Input Voltage	Output Voltage	Output Channel	Max. Load	Size(LxWxH)
100-240VAC	100-240VAC	2 Channels	Resistive load: max. 5.1A/CH Capacitive load: max. 1.7A/CH	45.5x45x20.3mm

Compatible Load Types			
Load Symbol	Load Type	Maximum Load	Remarks
	LED lamps with transformers	390W/CH @ 230V 180W/CH @ 110V	Due to variety of LED lamp designs, maximum number of LED lamps is further dependent on power factor result when connected to switch.
	LED drivers	390W/CH @ 230V 180W/CH @ 110V	Maximum permitted number of drivers is 390W divided by driver nameplate power rating.
	Incandescent lighting, HV Halogen lamps	1170W/CH @ 230V 560W/CH @ 110V	
	Low voltage halogen lighting with electronic transformers	390W/CH @ 230V 180W/CH @ 110V	

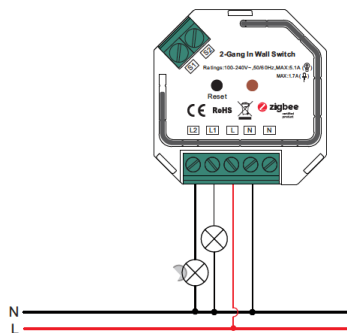
Egenskaber/Specifications

DA	EN
<ul style="list-style-type: none"> • Zigbee universal relæ baseret på seneste ZigBee 3.0 protocol • 100-240VAC input and output V • 2 kanal output, up to 1170W pr. udgang • Skrueterminaler til ledningsfastgørelse • Styring af Tænd/Sluk • Kan parres direkte via Touchlink • Kompatibel med universale ZigBee gateway produkter. • Kan kontrolleres via 2 separate fjedertryk (push). • Radio Frekvens : 2.4GHz • IP20 	<ul style="list-style-type: none"> • ZigBee in-wall switch based on latest ZigBee 3.0 protocol • 100-240VAC wide input and output • 2 channel Output, Up to 1170W /CH • Input and Output with Screw Terminals. • Enables to control ON/OFF • Can directly pair via Touchlink . • Compatible with universal ZigBee gateway products • Can be controlled by universal single wire push switch, 2 CH can be controlled separately by 2 switches • Radio Frequency : 2.4GHz • IP20

Anvendelse/Operation

- DA:** Benyt tilslutningsdiagram i forbindelse med installation
EN: Connect wiring according to connection diagram
- DA:** Denne universale Zigbee enhed er en trådløs modtager, der kan kommunikere med en række forskellige Zigbee kompatible systemer. Enheden modtager og kontrolleres af trådløse signaler fra kompatible Zigbee systemer.
EN: This ZigBee device is a wireless receiver that communicates with a variety of ZigBee compatible systems. This receiver receives and is controlled by wireless radio signals from the compatible ZigBee system.

Parring med Zigbee Gateway/Pairing with Zigbee Gateway (Philips HUE etc.)



- DA:** Sørg for at enheden er fjernet fra evt. tidligere zigbee-netværk. Hvis enhed allerede er registreret på et zigbee netværk vil parring fejle (se evt. info omkring ”Gendan fabriksindstillinger”)
EN: Remove the device from previous zigbee network if it has already been added to, otherwise pairing will fail. Please refer to the part "Restore factory settings".
- DA:** Fra din Zigbee controller eller interface, vælg ”add light” (tilføj lys) og tilgå parringstilstand.
EN: From your ZigBee Controller or hub interface, choose to add lighting device and enter Pairing mode as instructed by the controller.

- DA:** Tænd for enheden for at tilgå parringstilstand (når enheden er tilsluttet vil lyset blinke langsomt 2 gange). Parringstilstand varer indtil enheden er forbundet til et zigbee netværk.
EN: Power on the device to set it into network pairing mode (connected light flashes twice slowly), the network pairing mode will last until device is added to a zigbee network .
- DA:** Tilføj lyset i interface. Forbundet lys vil blinke 5-gange og herefter lyse stabilt. Enhed kan nu styres via anvendt interface.
EN: Connected light will blink 5 times and then stay solid on, then the device will appear in your controller's menu and can be controlled through controller or hub interface.

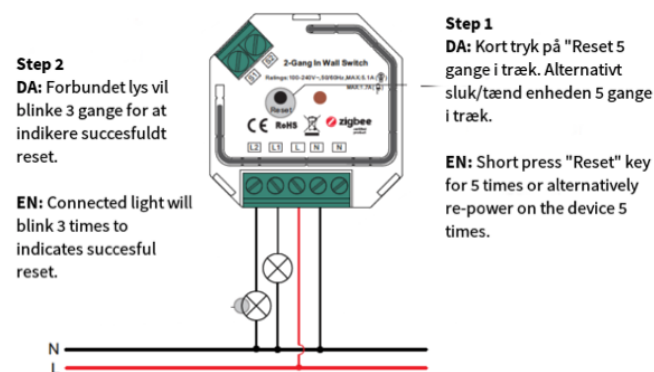
Gendan fabriksindstillinger/Restore factory settings

NOTE 1:

- DA:** Hvis enhed allerede er i fabriksindstilling, sker der ingenting ved reset.
EN: If device is already at factory default setting, there is no indication when factory resetting again.

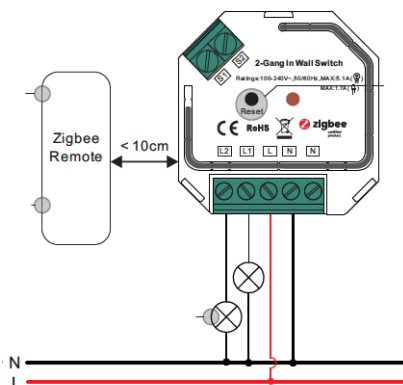
NOTE 2:

- DA:** Alle konfigurationer slettes ved reset.
EN: All configurations are deleted by reset.



Styring via Touchlink Zigbee Fjernbetjening/ Controlling with Touchlink Zigbee Remote (ZGR904-S)

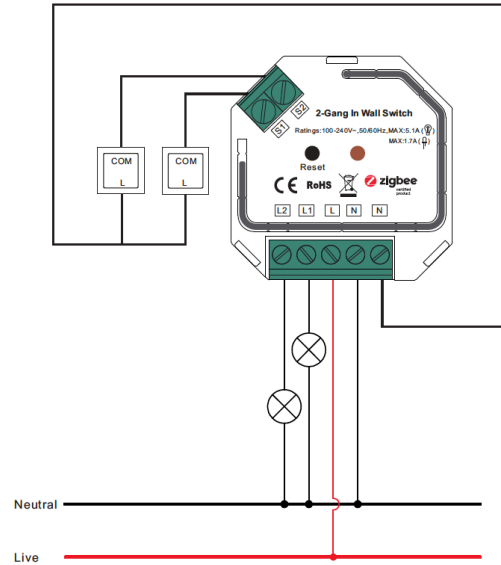
NOTE: Enhed kan kun linkes til 1 fjernbetjening/Each device can only be linked to 1 remote.



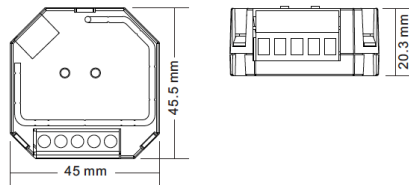
- 1. DA:** Metode 1 (enhed ikke tilføjet til Zigbee netværk): Kort tryk på 'Reset' knap eller tænd/sluk enhed 4 gange for at manuelt at tvinge enhed i touchlink mode. 180 sekunders timeout. I tilfælde af timeout gentag forfra.
Metode 2 (enhed er tilføjet til Zigbee netværk): Hvis enhed allerede er tilføjet et Zigbee netværk (eks. HUE) åbner den for touchlink paring mode med det samme. 180 sekunders timeout. I tilfælde af timeout sluk/tænd enheden.
EN: Method 1 (device has not been added to Zigbee network): Short press 'Reset' button or-repower on the device 4 times to start Touchlink commisioning immediately, 180s timeout, repeat operation.
Method 2 (device has been added to a Zigbee network): Device will be set into touchlink mode immediately, 180s timeout. Once timeout repower on the device to set into touchlink commisioning again.
- 2. DA:** Hold fjernbetjening indenfor 10cm af enheden.
EN: Keep remote within 10cm of the device.
- 3. DA:** Sæt fjernbetjening til touchlink mode (se vejledning for fjernbetjening)
EN: Put remote in touchlink commisioning mode (see remote manual).
- 4. DA:** Forbundet lys vil blinke to gange og enhed kan nu styres via fjernbetjening.
EN: Connected light will flash two times og device can now be controlled by the remote.

Tilslutningsdiagram via afbryder/Connection diagram through push switch

2. With 2PCS 1-Gang 1-Way Switches



Product Dimension



Notes for the diagrams:

- L - terminal for live lead
- N - terminal for neutral lead
- S1 - terminal for switch key No. 1
- S2 - terminal for switch key No. 2
- L1 - output terminal no. 1 for light load
- L2 - output terminal no. 2 for light load

Supported Switch Types:

The switch types this device supports can be configured by factory setting:

1. Push Switch (factory default setting)
2. Toggle On/Off Switch (can be configured by factory setting upon request)

1. With 1PC 2-Gang 1-Way Switch

